

## What do I need to have achieved to take this course?

It is necessary to have completed a GCSE in Geography and essential to have achieved a C grade or above. You will also need a C grade or above in English.



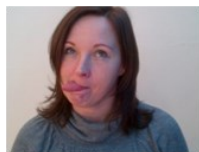
## Careers with Geography

Geography can lead to many related university courses but it is also held in high regard by many employers due to the vast range of skills and a geographer will develop through an A Level course. Skills such as communication, decision making, enquiry, problem solving; research, data collection and working in teams are just a few as well as the essential geographical knowledge and understanding developed. A Level geographers have gone on to become entrepreneurs, engineers, town planners, teachers, environmental consultants to name a few!

## Geography is Taught by



Mr Viner



Mrs Martin



Mrs McIvor

## How can I find out more?

There are a number of ways you can find out more about Geography. These include:

- ⇒ The CCEA microsite  
[www.ccea.org.uk/geography](http://www.ccea.org.uk/geography)
- ⇒ Teachers at your school or college
- ⇒ Students who have already studied the subject

G e o g r a p h y   a t   G l a s t r y

## Famous Geographers!

**Mother Teresa:** Missionary in Calcutta

**Michael Palin:** Of Monty Python

**Michael Jordan:** NBA Basketball player

**Prince William:** Heir to the throne of England

**Matthew Pinsent:** Olympic Gold Medallist

**James Cracknell:** Olympic Gold Medallist

## Geoquotes!

'Border relations between Canada and Mexico have never been better' **George W Bush**

'Geography is the subject which holds the key to the future' **Michael Palin**

'We don't inherit the Earth from our ancestors, we borrow it from our children' **Ancient Sioux Indian Proverb**

*Glastry College*

# A Level Geography



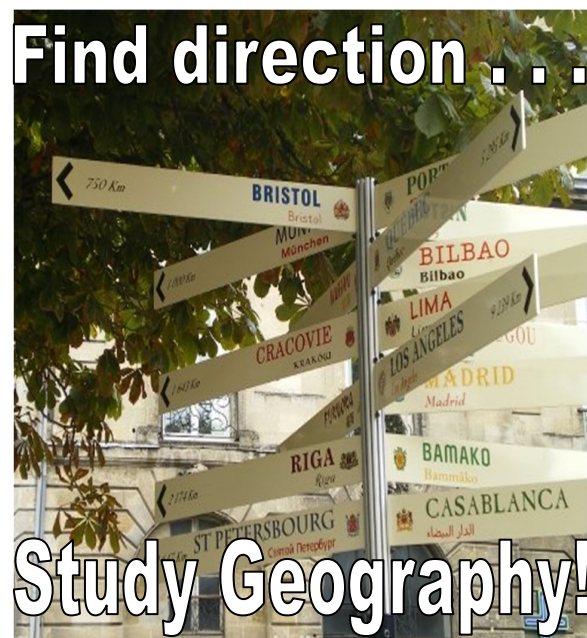
*Student  
Guide*

G e o g r a p h y   a t   G l a s t r y

# Why study Geography?

Turn on your TV, listen to the radio, or surf the internet almost any day and you will see and listen to coverage of events and issues that are at the very heart of Geography. Events such as flooding, storms and earthquakes or issues concerning climate change, fair trade and immigration are all fundamentally geographical.

Through studying geography you will develop an awareness and understanding of our changing world and learn to take a critical and reflective approach to the world around you. You will also be challenged to research and investigate local and global topical issues through data collection in the field and from multimedia sources. Ultimately, you will develop an understanding of your personal responsibilities for contributing towards a sustainable future in our society and on our planet.



## What will I learn?

### Year 13: AS Level

#### Unit AS1 Physical Geography

- ⇒ **Rivers:** the work they do, flood events and how humans interact and manage floods.
- ⇒ **Ecosystems:** succession and human interaction.
- ⇒ **Weather and Climate:** extreme weather events.

#### Unit AS2: Human Geography

- ⇒ **Population:** ageing populations and their impacts
- ⇒ **Settlement:** problems in urban and rural environments.
- ⇒ **Development:** the causes of variations in development across the world.

#### Unit AS3: Fieldwork Skills and Techniques

- ⇒ **Fieldwork Skills:** how to conduct geographical investigations
- ⇒ **Geographical Skills:** geographical research skills and statistical techniques



### Year 14: A2 Level

#### Unit A21: Physical Geography

- ⇒ **Plate Tectonics**—theory and outcomes
- ⇒ **Tropical Ecosystems** - nature and sustainability

#### Unit A22: Human Geography and Global Issues

- ⇒ **Ethnic Diversity**
- ⇒ **Tourism**

#### Unit A23: Decision Making in Geography

- ⇒ **Decision Making Exercise:** using source materials to reach a decision in a contentious, real world, geographical issue.

## How will I be assessed?

### AS Level (worth 40% of a full A Level)

#### Units AS1 and AS2

2 x 1h 15min examinations each worth 16% of a full A Level

Both papers have a similar structure

Section A: short answer questions

Section B: choose 2 from 3 essay questions

#### Unit AS3

1 x 1h examination worth 8% of a full A Level

### A2 Level (worth 60% of a full A Level)

#### Unit A21: Physical Geography and Decision Making

1 x 1h 30min examination worth 24% of a full A Level

Answer 2 essay questions 1 from each of the Unit 4 topics

#### Unit A22: Human Geography

1 x 1h 30min examination worth 24% of a full A Level

Answer 2 essay questions 1 from each of the Unit 3 topics

#### Unit A23: Decision making in Geography

1 x 1h 30min examination worth 8% of a full A Level

Complete a decision making exercise relating to a topical issue using resources provided in the examination

## Fieldwork

During the AS course in Year 13 students will have the opportunity to go on a 3 day residential to the north coast of Northern Ireland to study sand dune ecosystems and urban issues. (Please note the approximate cost of this trip is £50.) In Y14 there are several day trips including investigations into issues in the local area such as the impact of tourism in the Mourne Mountains. And an investigation of ethnic diversity in Belfast

